

July 2021

# Stainless steel range of condensing boilers

Outputs from  
50kW to 525kW

Designed to  
meet carbon  
reduction  
targets

Lifetime  
service  
and support

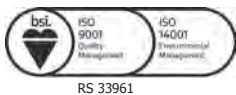
ErP Compliant 

Totally dependable.

**POTTERTON**  
COMMERCIAL

## Contents

Welcome	3
Sirius range	4
Sirius three WH 50-150kW	6
Sirius three FS 50-250kW	16
Sirius FS 400 and 525kW	24
Flue Options WH/FS	28
External flue kits	30
Plume management kits	31
Fluecades	32
Customer and Project Support	34



**Totally  
dependable.**

# Welcome

Potterton Commercial is one of the most recognised names in the heating industry.

Our success has been built on making products that customers can rely on, backed up by services they can trust.

You can depend on us to help at every stage of your project, from design and tender, through to installation, commissioning, handover and beyond.

Whatever the application, no matter how big or small, Potterton Commercial is totally dependable.

**High efficiency  
condensing  
boilers**



**Designed to  
meet carbon  
reduction  
targets**



**Lifetime  
service  
and support**



# Tried. Tested. Trusted.

Solid and dependable Sirius condensing boilers are designed for maximum combustion performance and energy efficiency.



## Sirius three WH

Wall-hung  
condensing boiler

Compact, lightweight,  
impressive modulation.

Modulation ratio

Up to **9:1**

Single boiler output

**50kW to  
150kW**

Cascade output

Up to  
**700kW**



## Sirius three FS

Floor-standing  
condensing boiler

Ideal for replacement  
projects, large domestic  
and all commercial  
premises.

Modulation ratio

Up to **9:1**

Single boiler output

**50kW to  
250kW**

Cascade output

Up to  
**1MW**



## Sirius FS

Floor-standing  
condensing boiler

Cost effective heating  
solution for large projects,  
such as schools, hotels,  
nursing homes and  
leisure facilities.

Modulation ratio

**5:1**

Single boiler output

**400kW and  
525kW**

## Whichever model you choose you can depend on:



### Reliability

Our boilers are all factory tested before sale and we will commission them for you to make sure they work reliably and efficiently. We also offer parts and labour warranties for extra peace of mind.



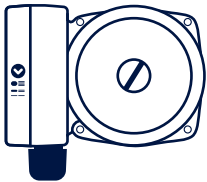
### Efficiency

Our modulating boilers will meet the variable heating requirements of any building, optimising energy efficiency and running costs.



### Engineering quality

All of our products are manufactured using tried and tested technology, and meet the latest ISO standards.



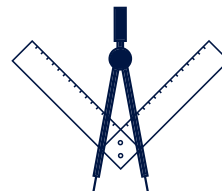
### Genuine parts

We support parts for all our boilers for up to 10 years after they have stopped being sold, so the boiler will be supported throughout its lifetime.



### Online support

Our website contains all the information you need, including BIM and CAD files, brochures, technical specification sheets, case studies, installation manuals and user guides.



### Specification and sales support

Our technical support experts can guide you through building regulations, legislation and building service engineering standards. Our dedicated sales team is never more than a phone call away and our New Design team can work with you to provide a system designed solution for your project.



## Sirius three WH



Compact and lightweight, Sirius three WH condensing boilers offer impressive modulation ratio of up to 9:1 and come with weather compensation as standard, ensuring high seasonal efficiency all year around.

### Single boiler outputs

**50kW to  
150kW**

Gross seasonal  
efficiency

**Up to  
97.3%**

Modulation ratio

**Up to 9:1**

### Cascade output

**Up to  
700kW**

Off mains gas

**LPG  
option available**

### Applications

From large domestic properties to medium sized commercial premises.

### Commissioning

Carried out by Potterton Commercial engineers, ensures optimum performance, efficiency and savings and guarantees your free 5 year warranty.

### Service plans

We provide expert, professional support, ensuring optimum performance is maintained throughout the lifetime of the boiler.

\*Subject to terms and conditions.  
See [pottertoncommercial.co.uk](http://pottertoncommercial.co.uk) for more details.

## Features and benefits

Features	Benefits
Wide range of outputs: 50, 60, 70, 90, 110, 130, 150kW	Suitable for most commercial applications
Modulation ratio of up to 9:1	Wide modulation ratio reduces constant on/off cycling to improve efficiency and boiler longevity
Gross seasonal efficiency up to 97.3% with weather compensation as standard	Reduced energy consumption
QA75 Twist Knob full text controller	Simple descriptive display and easy to use advanced programming functions
Can be programmed to work with solar thermal, biomass and buffer tanks	Sustainable, energy efficient solution across complete range
Lightweight stainless steel heat exchanger	Reliable and energy efficient heat transfer
Integrated Cascade function	Up to 16 boilers can be managed by the Siemens controller
Low NOx under 24.7mg/kW	Minimises impact on the environment
Optional 0-10 volt output	For quick and simple integration with BMS
LPG options available	Suitable for off-grid applications

## Optional accessories

A range of intelligent controls and accessories are available for use with the Sirius three WH boiler range, to meet the heating requirements of the building accurately and efficiently.

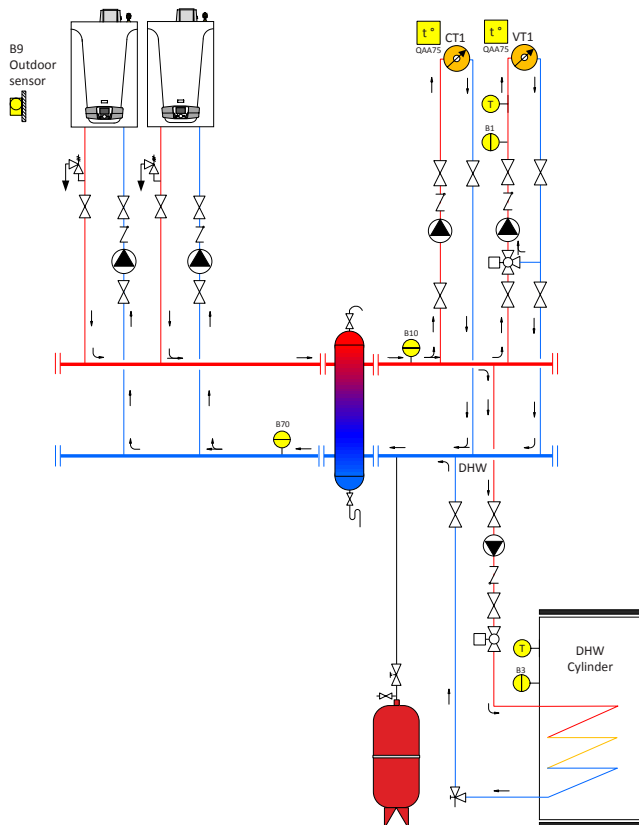
Model	Sales code	Description
Wired remote control – boiler	5140905	Digital space heating control with programming functions for temperature management of heating and hot water circuit(s), boiler cascades and more accurate boiler modulation control.
Extension module	5140909	<ul style="list-style-type: none"> <li>• Multi-purpose unit</li> <li>• Single boiler functions – control of multiple circuits, control for a mixture of CT and VT circuits and their associated valves and pumps, 0-10 volt connections</li> <li>• Boiler cascade functions – control of multiple circuits, control for a mixture of CT and VT circuits and their associated valves and pumps, 0-10 volt connections, control of boiler cascades.</li> </ul>
BM BUS communication module	5140908	A device for two way communication management between boilers in cascades or a variety of zone controllers and the boiler(s).
Flow temperature sensor (boiler)	5103867	Strap-on pipe sensor for monitoring boiler flow temperature. For further improvements to system performance, it is advisable to use a sensor on both flow and return. Only required for cascade configurations.
Zone controller – intelligent wiring centre	5140910	Heating circuit controller for systems using BUS communications with multiple zones that are independently controlled.
DHW temperature sensor	5116436	Immersion dry pocket temperature sensor, providing boiler temperature control for DHW storage vessels.
50 WH LPG conversion kit	5140911	Kit to convert natural gas appliance to LPG fuel type (50kW model).
60 WH LPG conversion kit	5140912	Kit to convert natural gas appliance to LPG fuel type (60kW model).
70 WH LPG conversion kit	5140913	Kit to convert natural gas appliance to LPG fuel type (70kW model).
90 WH LPG conversion kit	5140914	Kit to convert natural gas appliance to LPG fuel type (90kW model).
110 WH LPG conversion kit	5140915	Kit to convert natural gas appliance to LPG fuel type (110kW model).
Boiler frame 50-70kW	7691300	Single Boiler Frame
Boiler frame 90-150kW	7717033	Single Boiler Frame
Primary Loop Pump Kit	5142796	Only suitable for the 50-110kW models
Integral Boiler pump UPMXL 25-125 130 PWM Control	7709445	Only suitable for the 130-150kW models
50 to 70kW WH flue non-return valve kit	7106820	Flue non-return valve kit for boilers in cascade configurations (50 and 70kW models).
90 to 150kW WH flue non-return valve kit	7700811	Flue non-return valve kit for boilers in cascade configurations (130 and 150kW models).

# System requirements

Installations should comply with all relevant codes of practice, British Standards and current Building Regulations. The maximum efficiency of the Sirius three WH can be achieved when it is installed on a fully condensing system with suitable distribution design temperatures.

## Typical heating system layout

Cascade option for two or more boilers



## Weather compensated systems

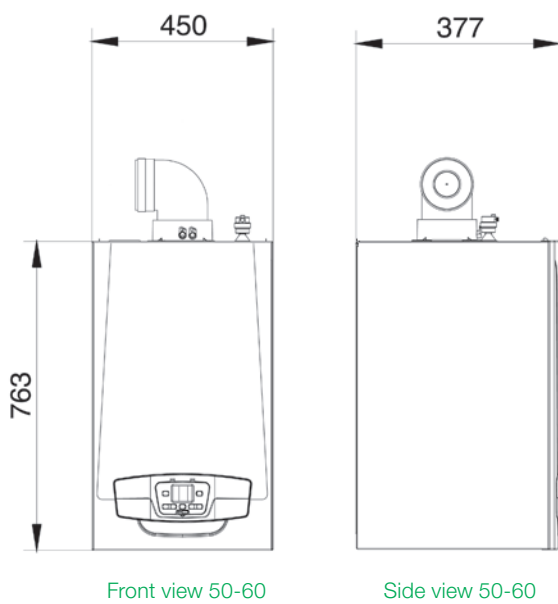


If the heating curve is correctly selected, the outside sensor will dictate the heating flow temperature to match the heating demand of the building. The optional room control will shut down the boiler(s) if the building meets the set-point temperature.

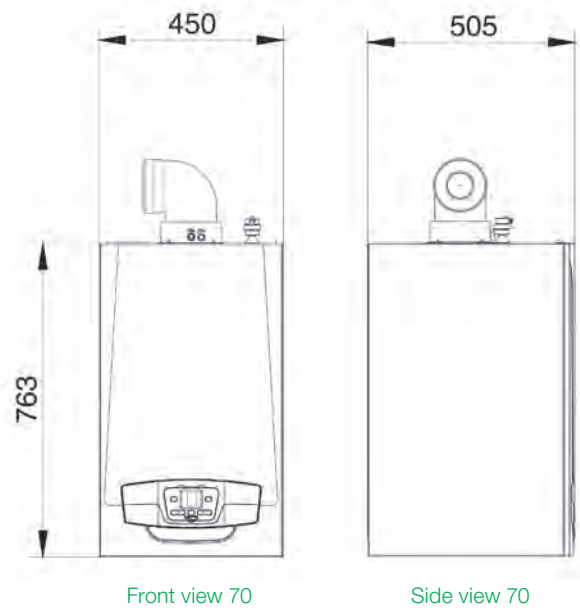


# Dimensions

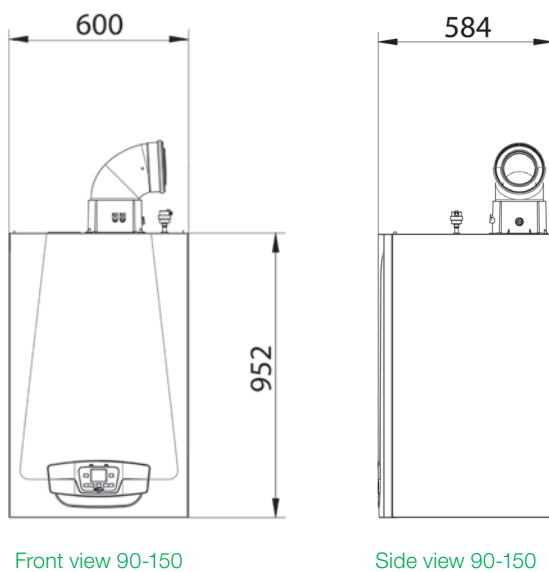
## Sirius three WH 50/60kW



## Sirius three WH 70kW



## Sirius three WH 90/110/130/150kW



# Technical specification

Performance	Fuel Type		Sirius three WH 50	Sirius three WH 60	Sirius three WH 70	Sirius three WH 90
Output @ 80/60°C	NG	kW	45.1	55.0	65.1	85.1
Output @ 50/30°C	NG	kW	48.6	59.4	70.3	91.8
Input (Gross) Maximum	NG	kW	51.4	62.8	74.3	97.0
Input (Net) Maximum	NG	kW	46.3	56.6	66.9	87.4
Output @ 80/60°C	LPG	kW	45.1	55.0	65.1	85.1
Output @ 50/30°C	LPG	kW	48.6	59.4	70.3	92.2
Input (LPG) (Gross) Maximum	LPG	kW	51.4	62.8	74.3	97.0
Input (LPG) (Net) Maximum	LPG	kW	47.3	57.8	68.4	89.3

Efficiency	Value %					
Efficiency @ 80/60°C - 100% Load	% Gross		87.8	87.6	87.6	87.7
Efficiency at 50/30°C - 100% Load	% Gross		94.61	94.61	94.61	95.06
Efficiency @ 30% Load	% Gross		97.1	96.8	96.5	96.9
Current Building Regulations - Part L2 Seasonal Efficiency	% Gross		96.6	96.4	96.1	96.5
ErP efficiency rating			A	A	A	N/A

## Gas

Gas Consumption (Natural Gas)	m³/h	4.90	5.98	7.07	9.25
Gas Consumption (LPG)	Kg/h	3.60	4.40	5.20	6.60
Inlet Gas Pressure (Natural Gas - G20)	m/bar			17 - 25	
Inlet Gas Pressure (LPG - G31)	m/bar			27 - 45	
Gas Connection Size	inch	¾	¾	¾	1
Gas Connection Type				Male Thread	

## Flue

Flue Gas Volume at 80/60°C (NG)	m³/h at STP	67.6	82.6	97.7	127.6
Flue Gas Volume at 50/30°C (NG)	m³/h at STP	62.8	76.5	90.5	117.7
Flue Gas Volume at 80/60°C (LPG)	m³/h at STP	61.5	75.2	88.9	114.1
Flue Gas Volume at 50/30°C (LPG)	m³/h at STP	57.1	69.6	82.4	105.2
Max Flue Gas Pressure @ Outlet (B23)	pa	270	270	270	200

## Hydraulic

Water Flow Rate @ 15°C ΔT	l/s	0.72	0.88	1.04	1.36
Water Flow Rate @ 20°C ΔT	l/s	0.54	0.66	0.78	1.02
Water Flow Rate @ 30°C ΔT	l/s	0.36	0.44	0.52	0.68
Hydraulic Resistance @ 15°C ΔT	kPa	85	92	45	35
Hydraulic Resistance @ 20°C ΔT	kPa	48	55	30	22
Hydraulic Resistance @ 30°C ΔT	kPa	22	24	18	10
Water Content	litres	4	5	6	9
Flow & Return Connection Size	inch	1"	1"	1"	1½"
Flow & Return Connection Type				Male Thread	
Flue Connection Size	mm	80/125		80/125	110/160
Maximum Boiler Operating Pressure	bar			4	
Minimum Boiler Operating Pressure	bar			1	
Maximum Flow Temperature	°C			85	

## General

Appliance Dry Weight	Kg	40	40	50	83
NOx Level (Dry @ 0% O2)	mg/kWh	29	31	31	31
CO <sub>2</sub> Content – Natural Gas	%	8.5 - 9	9	8.5 - 9	8.5 - 9
CO <sub>2</sub> Content – LPG	%	9.5 - 10	9.4 - 10.1	9.5 - 10	9.9 - 10
High Level Ventilation (BS 6644)	cm²	93	113	134	175
Low Level Ventilation (BS 6644)	cm²	185	226	268	350

## Electrical

Power consumption	W	80	95	95	130
Nominal Supply Voltage	V/Hz			230 v 1 Ph 50 Hz	

Sirius three WH 110	Sirius three WH 130	Sirius three WH 150
------------------------	------------------------	------------------------

102	121.5	140.3
110.2	130.6	150.9
116.4	137.4	158.6
104.9	123.8	143.0
102	121	140
110.2	130	150
116.4	137.4	158.6
107.2	126.6	146.0

87.6	88.4	88.4
94.70	95.1	95.1
96.8	97.8	97.8
96.4	97.3	97.3
N/A	N/A	N/A

11.1	13.1	15.1
7.92	9.8	11.3

17 - 25

27 - 45

1	1	1
---	---	---

Male Thread

147.2	181	208
136.2	166	191
139.3	168	184
128.9	153	170
200	180	270

1.63	2.08	2.71
1.22	1.56	2.03
0.81	1.0	1.2
36	69	70
22	41	41
11	18	20
10	10	11
1½"	1½"	1½"

Male Thread

110/160	110/160	110/160
---------	---------	---------

4	6
---	---

1

85

93	93	96
22	17	23
9 - 9.2	9.2	9.2
9.5 - 10	10.2	10.2
210	284	286
420	496	572

165	187	283
-----	-----	-----

230 v 1 Ph 50 Hz

## Single boiler outputs

**50kW to  
150kW**

## Gross seasonal efficiency

Up to  
**97.3%**

## Modulation ratio

Up to **9:1**

## Cascade outputs

Up to  
**750kW**

## High efficiency condensing boilers

Designed to meet carbon reduction targets

Lifetime service and support



# Cascade frame kit

The Sirius three WH cascade frame kit can accommodate up to up to six boilers, delivering a maximum output of 750kW, spreading heat demand across multiple boilers.



Number of boilers	Maximum output	Modulation ratio
Up to <b>6</b>	Up to <b>750kW</b>	Up to <b>9:1</b> per boiler

## Features

- Compact, modular floor-standing framework
- Adjustable mounting feet
- Hydraulically sized flow/return manifolds
- Victaulic pipe fittings
- Robust insulation kits for flow/return headers, including hydraulic manager
- Class A primary circulator pumps
- Steel gas manifold pipework with welded brackets
- Hydraulic system manager including air and dirt separation, and velocity management
- Magnetic filtration optional extra available
- Concentric and conventional flue options

## Benefits

- Saves space and reduces installation time
- Safe and stable for uneven surfaces
- Matches the designed total flow rate, whatever the system load
- Quick and easy jointing. Saves time and effort
- Minimises heat loss
- ErP ready
- Robust, durable flow, return and gas headers
- Protects boiler components by ensuring clean system and water and removes air, preventing noise
- Additional protection for the boilers and system water
- Flexible siting, easy installation

## Nationwide commissioning service

To ensure maximum efficiency, cost savings and to guarantee your free 5 year warranty, we offer a full commissioning service, carried out by our own national team of Gas Safe registered, Potterton Commercial trained engineers.

To arrange commissioning of your products simply contact 0345 070 1058

For After Sales Technical Support contact 0345 070 1057

## Kit components

All cascade frame kits come with the below items as standard:

---

Floor-standing boiler frame

---

Flow/return pipework headers

---

Gas pipework header

---

Isolation valve kit for flow/return

---

Gas isolation valve kit

---

Grundfos primary loop pumps  
(controlled by boilers)

---

Prefabricated push fit-pipework insulation

---

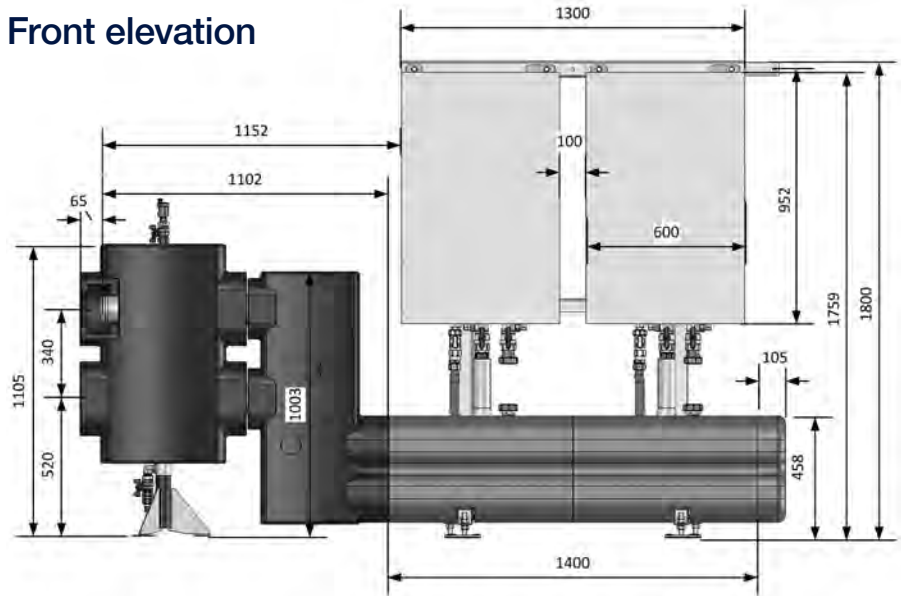
Connection kit to low loss header\*

---

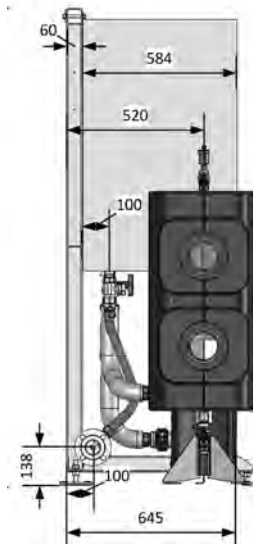
Optional low loss header\*

\*Subject to package option selected.

## Front elevation



## Side elevation



These drawings show an example of our x2 boiler Sirius two WH 90 and 110kW cascade frame kit solution.

Other boiler and configuration options will vary in size.

## In-line configurations

Part numbers / No. of boilers (Including low loss header)

	2	3	4	5	6
<b>Sirius 50kW</b>	5141060	5141061	5141062	-	-
<b>Sirius 60kW</b>	5141060	5141061	5141062	-	-
<b>Sirius 70kW</b>	5141060	5141061	5141062	-	-
<b>Sirius 90kW</b>	5141064	5141065	5141066	5141067	5141068
<b>Sirius 110kW</b>	5141064	5141065	5141066	5141067	5141068
<b>Sirius 130kW</b>	7718096	7718097	7718098	7718099	-
<b>Sirius 150kW</b>	7718096	7718097	7718098	7718099	-

Part numbers / No. of boilers (Excluding low loss header)

	2	3	4	5	6
	5141019	5141020	514021	-	-
	5141019	5141020	514021	-	-
	5141019	5141020	514021	-	-
	5141023	5141024	514025	514026	5141027
	5141023	5141024	514025	514026	5141027
	7718140	7718141	7718142	7718143	-
	7718140	7718141	7718142	7718143	-

For single boiler frames please see accessories on page 7

## Cascade Accessories

(130 & 150kW cascade systems only)

7717862	Magna 1 25-100 Circulator Pump
7717863	Magna 1 25-120 Circulator Pump
7717864	Magna 3 25-100 Circulator Pump
7717865	Magna 3 25-120 Circulator Pump
7709445	UPMXL 25-125 130 H3 Circulator Pump

## Individual Low Loss Headers

5142190	Flow / Return Header DN50 - up to 125kW
5142191	Flow / Return Header DN65 - up to 330kW
5142192	Flow / Return Header DN80 - up to 440kW
5142193	Flow / Return Header DN100 - up to 700kW

Example configuration

### 5 x 90kW Sirius three WH

Max output

### 450kW



For technical details such as CAD drawings and BIM files visit [www.pottertoncommercial.co.uk](http://www.pottertoncommercial.co.uk) or contact Technical Support on 0345 070 1058 or scan the QR code.



## Corner group configurations

Part numbers / No. of boilers (Including low loss header)

Part numbers / No. of boilers (Excluding low loss header)

Inc. corner piece(s)	4	5	6 (3+3)	6 (2+4)	6 (2+2+2)
Sirius 50kW	5141063	-	-	-	-
Sirius 60kW	5141063	-	-	-	-
Sirius 70kW	5141063	-	-	-	-
Sirius 90kW	514069	5141070	5141071	5141072	5141073
Sirius 110kW	514069	5141070	5141071	5141072	5141073

4	5	6 (3+3)	6 (2+4)	6 (2+2+2)
5141022	-	-	-	-
5141022	-	-	-	-
5141022	-	-	-	-
5141028	5141029	5141030	5141031	5141032
5141028	5141029	5141030	5141031	5141032

\*Sirius 130/150 models are not suitable for use with corner cascades.

Example configuration

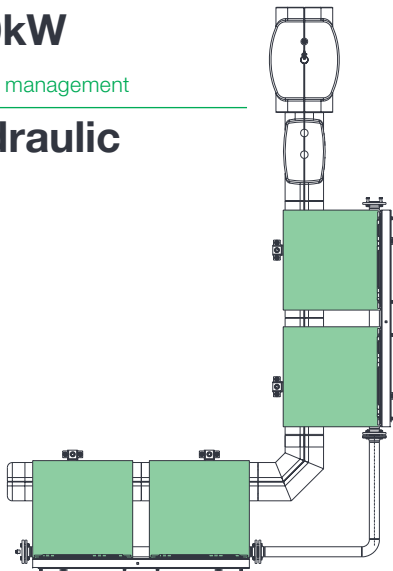
### 4 x 50kW Sirius three WH

Max output

### 200kW

System management

### Hydraulic



Example configuration

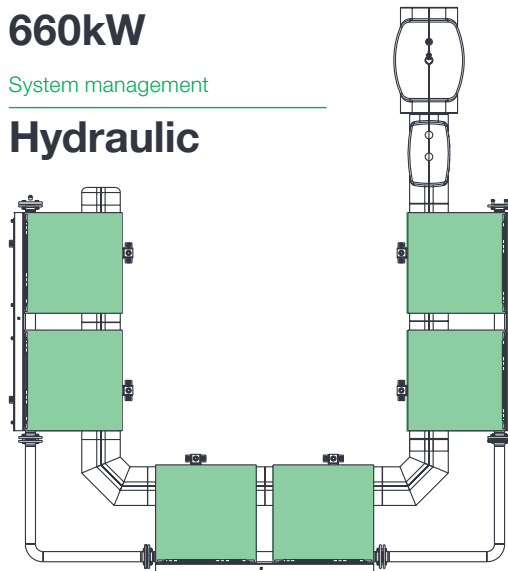
### 6 x 110kW Sirius three WH

Max output

### 660kW

System management

### Hydraulic



# WH 90-150kW Rig Systems

The Sirius three wall-hung multiple boiler rigs are designed and manufactured to meet the requirements of both large commercial and light industrial applications. Our flexible rigs arrive on site pre-assembled to significantly speed up installation time. This makes them perfectly suited to projects with plant room limitations and tight deadlines.



## Complete pre-assembled solutions

Each state-of-the-art controlled plant room system includes:

- Bespoke configuration of Sirius three wall-hung boilers
- Boiler frame with insulated pipework set
- Dosing pot
- Smedegaard Pressurisation Unit
- Low Loss Header or Plate Heat Exchanger
- Grundfos pumps
- Customised controls and panel.

Models available

**90, 110,  
130 and  
150kW**

Cascade output

**Up to  
600kW**

## Features

Turn-key solution delivered in 4-5 weeks

2, 3 or 4 boiler configurations available

Designed as a complete package

In-line or back-to-back configurations available

Boilers can be taken offline for servicing independently

Full dimensional, hydraulic and electrical schematics and BIM files supplied for every installation

## Benefits

Ready when you are, with no on-site fabrication required

Flexibility for businesses of all sizes

Rapid installation and commissioning

Solutions for plant rooms of all shapes and sizes

Minimal disruption or impact on system performance

All the information you need, right at your fingertips

For more information, contact your Baxi Heating Area Sales Manager or our internal sales team on 0345 070 1055.



## Standard configurations

Low Loss Header	Item Code
Sirius Rig 2 x WH90 I/L +LLH	7764083
Sirius Rig 3 x WH90 I/L +LLH	7764084
Sirius Rig 4 x WH90 B2B +LLH	7764085
Sirius Rig 2 x WH110 I/L +LLH	7764086
Sirius Rig 3 x WH110 I/L +LLH	7764087
Sirius Rig 4 x WH110 B2B +LLH	7764088
Sirius Rig 2 x WH130 I/L +LLH	7764089
Sirius Rig 3 x WH130 I/L +LLH	7764090
Sirius Rig 4 x WH130 B2B +LLH	7764091
Sirius Rig 2 x WH150 I/L +LLH	7764092
Sirius Rig 3 x WH150 I/L +LLH	7764093
Sirius Rig 4 x WH150 B2B +LLH	7764094
Plate Heat Exchanger	Item Code
Sirius Rig 2 x WH90 I/L +PHEX	7764095
Sirius Rig 3 x WH90 I/L +PHEX	7764096
Sirius Rig 4 x WH90 B2B +PHEX	7764097
Sirius Rig 2 x WH110 I/L +PHEX	7764098
Sirius Rig 3 x WH110 I/L +PHEX	7764099
Sirius Rig 4 x WH110 B2B +PHEX	7764100
Sirius Rig 2 x WH130 I/L +PHEX	7764101
Sirius Rig 3 x WH130 I/L +PHEX	7764102
Sirius Rig 4 x WH130 B2B +PHEX	7764103
Sirius Rig 2 x WH150 I/L +PHEX	7764104
Sirius Rig 3 x WH150 I/L +PHEX	7764105
Sirius Rig 4 x WH150 B2B +PHEX	7764106

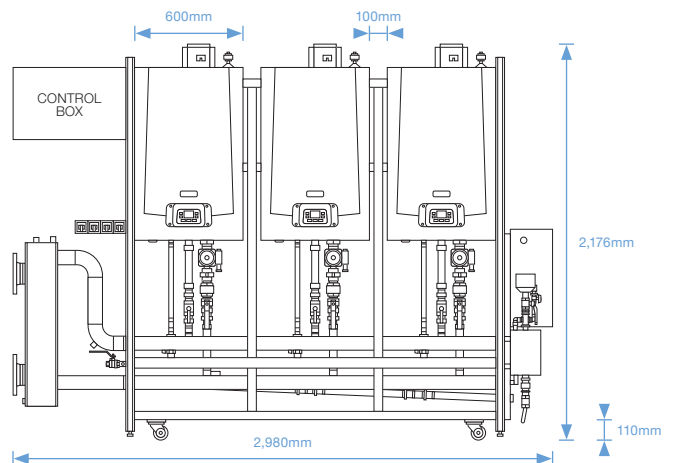
## Full range of header types

Included in the Sirius WH rig system is the option of either a Low Loss Header or Plate Heat Exchanger. Units are generally pre-piped to a single balance header, with tappings configured to suit the site's requirements in terms of size, position and quantity.

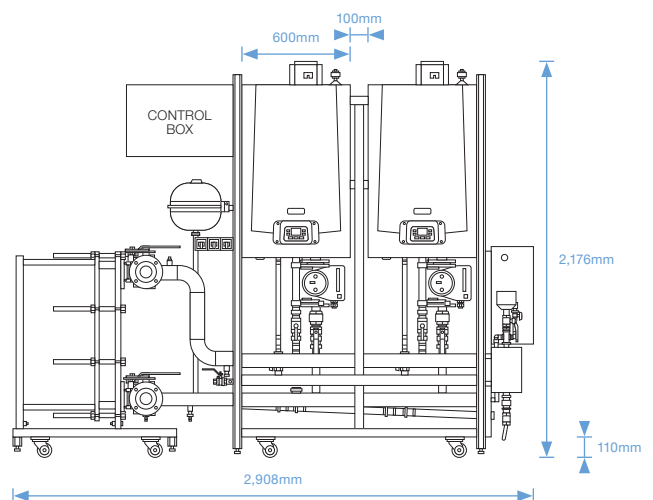
## Get in touch

To find out more please speak to your Baxi Heating Commercial Area Sales Manager or contact our internal sales team on **0345 070 1055**.

### Low Loss Header configuration example



### Plate Heat Exchanger configuration example



**A**  
Efficiency Rating



# Sirius three FS

## 50-250kW



Compact floor-standing, stainless steel condensing boilers suitable for a variety of applications including replacement projects, large domestic, and commercial premises requiring outputs from 50kW to 1MW.

### Single boiler outputs

**50kW to  
250kW**

### Gross seasonal efficiency

**Up to  
97.5%**

### Modulation ratio

**Up to 9:1**

### Cascade output

**Up to 1MW**

### Off mains gas

**LPG  
option available**

### Applications

From large domestic properties to medium sized commercial premises.

### Commissioning

Carried out by Potterton Commercial engineers, ensures optimum performance, efficiency, savings and guarantees your 5 year warranty.

### Service plans

We provide expert, professional support, ensuring optimum performance is maintained throughout the lifetime of your boiler.

\*Subject to terms and conditions.  
See [pottertoncommercial.co.uk](http://pottertoncommercial.co.uk) for more details.

## Features and benefits

Features	Benefits
Wide range of outputs: 50, 70, 90, 110, 130, 150, 200, 250kW Modulation ratio of up to 9:1	Suitable for a wide range of commercial applications Wide modulation ratio reduces constant on/off cycling to improve efficiency and boiler longevity
Gross seasonal efficiency up to 97.5% with weather compensation supplied as standard	Reduced energy consumption
QA75 Twist Knob full text controller	Simple descriptive display and easy to use advanced programming functions
Lightweight stainless steel heat exchanger	Reliable and energy efficient heat transfer
Integrated Low Loss Headers and Plate Heat Exchangers (available as options)	Professional finish, easier to install, offers a reduced footprint
Very compact design with castors on the bottom of larger output boiler	Boilers will pass through 700mm doors. Easier to position when space is at a premium. Largest boilers have wheels for enhanced manoeuvrability
Integrated Cascade function	Up to 16 boilers can be managed by the Siemens controller
Optional 0-10 volt output	For quick and simple integration with BMS
LPG options available	Suitable for off-grid applications
Low NOx under 24.7mg/kW	Minimises impact on the environment

## Optional accessories

A range of intelligent controls and accessories are available for use with Sirius three FS boilers, to meet the heating requirements of the building accurately and efficiently.

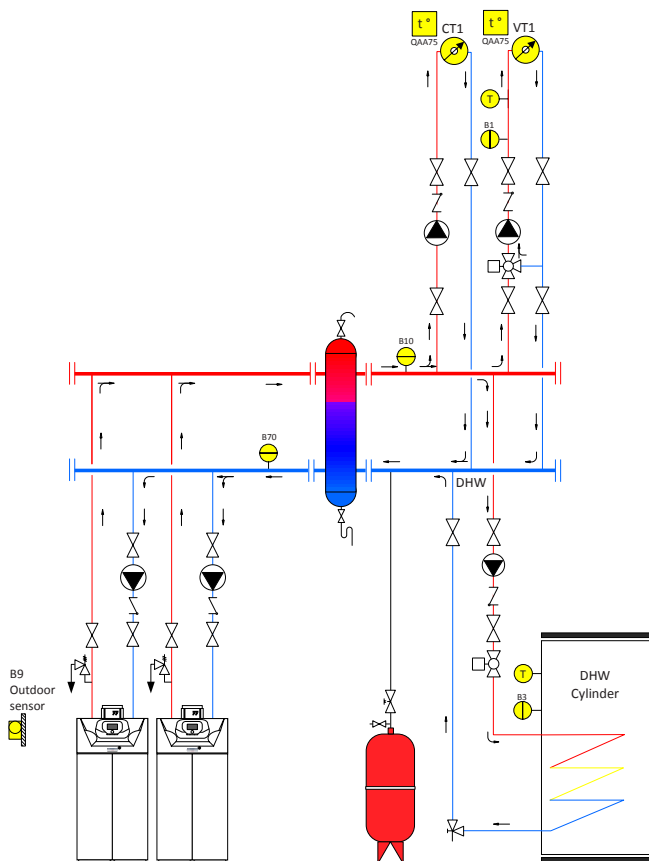
Model	Sales code	Description
Wired remote control – boiler	5140905	Digital space heating control with programming functions for temperature management of heating and hot water circuit(s), boiler cascades and more accurate boiler modulation control.
Extension module	5140909	<ul style="list-style-type: none"> <li>• Multi-purpose unit.</li> <li>• Single boiler functions – control of multiple circuits, control for a mixture of CT and VT circuits and their associated valves and pumps, 0-10 Volt connections.</li> <li>• Boiler cascade functions - control of multiple circuits, control for a mixture of CT and VT circuits and their associated valves and pumps, 0-10 Volt connections, control of boiler cascades.</li> </ul>
BM BUS communication module	5140908	A device for two-way communication management between boilers in cascades or a variety of zone controllers and the boiler(s).
Flow temperature sensor (boiler)	5103867	Strap-on pipe sensor for monitoring boiler flow temperature. For further improvements to system performance, it is advisable to use a sensor on both flow and return. Only required for cascade configurations.
Zone controller – intelligent wiring centre	5140910	Heating circuit controller for systems using BUS communications with multiple zones that are independently controlled.
DHW temperature sensor	5116436	Immersion dry pocket temperature sensor, providing boiler temperature control for DHW storage vessels.
50 FS LPG conversion kit	5140911	Kit to convert natural gas appliance to LPG fuel type (50kW model).
70 FS LPG conversion kit	5140913	Kit to convert natural gas appliance to LPG fuel type (70kW model).
90 FS LPG conversion kit	5140914	Kit to convert natural gas appliance to LPG fuel type (90kW model).
110 FS LPG conversion kit	5140915	Kit to convert natural gas appliance to LPG fuel type (110kW model).
50 to 70kW FS flue non-return valve kit	5142804	Flue non return valve kit for boilers in cascade configurations (50 to 70kW models).
90 to 150kW FS flue non-return valve kit	7700811	Flue non return valve kit for boilers in cascade configurations (90 to 150kW models).

LPG conversion kits are included with 130, 150, 200 and 250kW boilers

# System requirements

All installations should comply with all relevant codes of practice, British Standards and current Building Regulations. The maximum efficiency of the Sirius three FS can be achieved when it is installed on a fully condensing system with suitable distribution design temperatures.

## Typical heating system layout



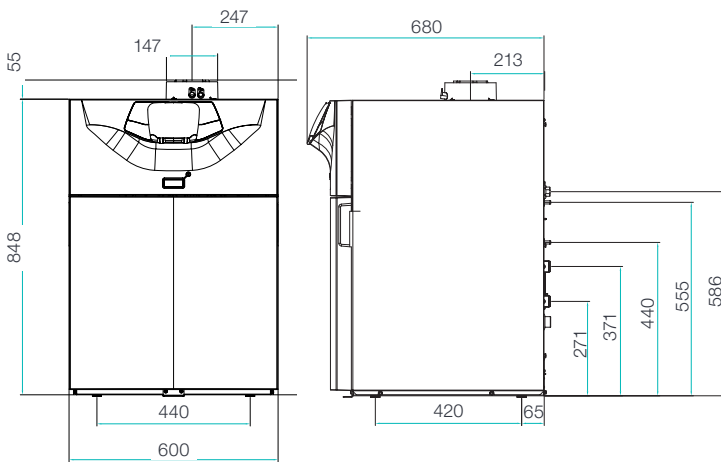
## Weather compensated systems



If the heating curve is correctly selected, the outside sensor will dictate the heating flow temperature to match the heating demand of the building. The optional room control will shut down the boiler(s) if the building meets the set-point temperature.

# Dimensions

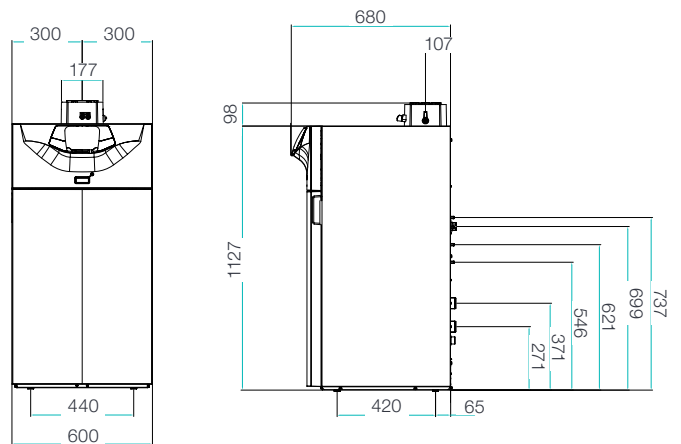
## Sirius three FS 50/70kW



Front view 50/70

Side view 50/70

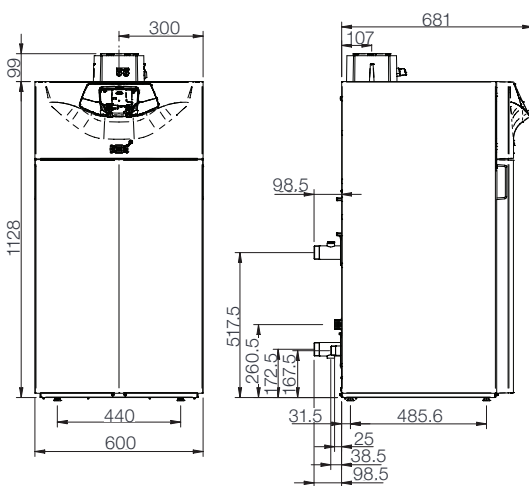
## Sirius three FS 90/110kW



Front view 90/110

Side view 90/110

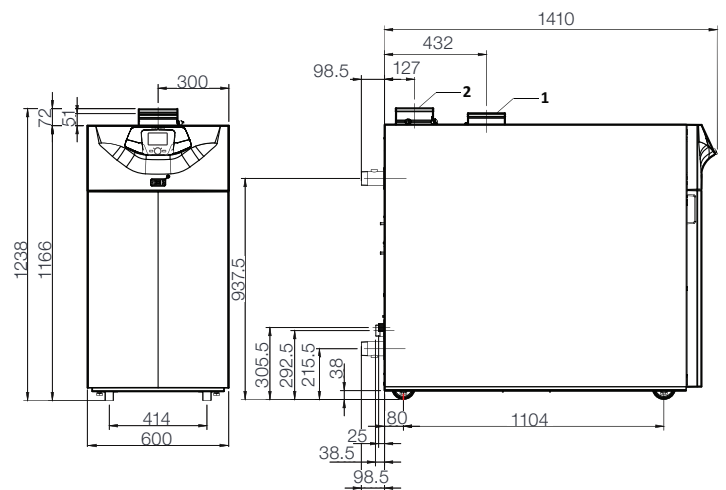
## Sirius three FS 130/150kW



Front View 130/150

Side View 130/150

## Sirius three FS 200/250kW



Front View 200/250

Side View 200/250

# Technical specification

Performance	Fuel Type		Sirius three FS 50	Sirius three FS 70	Sirius three FS 90	Sirius three FS 110
Output @ 80/60°C	NG	kW	45.1	65.1	85.1	102
Output @ 50/30°C	NG	kW	48.6	70.3	91.8	110.2
Input (Gross) Maximum	NG	kW	51.4	74.3	97	116.4
Input (Net) Maximum	NG	kW	46.3	67.0	87.4	104.9
Output @ 80/60°C	LPG	kW	45.1	65.1	85.1	102
Output @ 50/30°C	LPG	kW	48.6	70.3	92.2	110.2
Input (LPG) (Gross) Maximum	LPG	kW	51.4	74.3	97.5	116.4
Input (LPG) (Net) Maximum	LPG	kW	47.3	68.4	89.8	107.2

Efficiency	Value %		Sirius three FS 50	Sirius three FS 70	Sirius three FS 90	Sirius three FS 110
Efficiency @ 80/60°C - 100% Load	% Gross		87.8	87.6	87.7	87.6
Efficiency at 50/30°C - 100% Load	% Gross		94.6	94.6	95.1	94.7
Efficiency @ 30% Load	% Gross		97.1	96.8	96.9	96.8
Current Building Regulations - Part L2 Seasonal Efficiency	% Gross		97.1	96.9	97.0	96.9
ErP efficiency rating			A	A	N/A	N/A

## Gas

Gas Consumption (Natural Gas)	m³/h	4.9	7.07	9.25	11.1
Gas Consumption (LPG)	Kg/h	3.59	5.19	6.79	8.15
Inlet Gas Pressure (Natural Gas - G20)	m/bar		20		
Inlet Gas Pressure (LPG - G31)	m/bar		37		
Gas Connection Size	inch	¾	¾	1	1
Gas Connection Type			Male Thread		

## Flue

Flue Gas Volume at 80/60°C (NG)	m³/h at STP	67.6	97.7	127.6	147.2
Flue Gas Volume at 50/30°C (NG)	m³/h at STP	62.8	90.5	117.7	136.2
Flue Gas Volume at 80/60°C (LPG)	m³/h at STP	61.5	88.9	114.1	139.3
Flue Gas Volume at 50/30°C (LPG)	m³/h at STP	57.1	82.4	105.2	128.9
Max Flue Gas Pressure @ Outlet (B23)	pa		200		

## Hydraulic

Water Flow Rate @ 15°C ΔT	l/s	0.72	1.04	1.36	1.63
Water Flow Rate @ 20°C ΔT	l/s	0.54	0.78	1.02	1.22
Water Flow Rate @ 30°C ΔT	kW	0.36	0.52	0.68	0.81
Hydraulic Resistance @ 15°C ΔT	kPa	94	52	40	40
Hydraulic Resistance @ 20°C ΔT	kPa	54	32	22	22
Hydraulic Resistance @ 30°C ΔT	kPa	22	18	10	11
Water Content	litres	3	5	9	10
Flow & Return Connection Size	inch	1	1	1½	1½
Flow & Return Connection Type			Male Thread		
Flue Connection Size	mm	80/125	80/125	110/160	110/160
Maximum Boiler Operating Pressure	bar			4	
Minimum Boiler Operating Pressure	bar			1	
Maximum Flow Temperature	°C			85	

## General

Appliance Dry Weight	Kg	60	70	104	109
NOx Level (Dry @ 0% O <sub>2</sub> )	mg/kWh	27	31	36	22
CO <sub>2</sub> Content – Natural Gas	%	8.5 - 9	8.5 - 9	8.5 - 9	9 - 9.2
CO <sub>2</sub> Content – LPG	%	9.5 - 10	9.5 - 10	9.9 - 10	9.5 - 10
High Level Ventilation (BS 6644)	cm²	93	134	175	210
Low Level Ventilation (BS 6644)	cm²	185	268	350	418

## Electrical

Power consumption	W	100	117	146	185
Nominal Supply Voltage	V/Hz		230 v 1 Ph 50 Hz		

Sirius three FS 130	Sirius three FS 150	Sirius three FS 200	Sirius three FS 250
------------------------	------------------------	------------------------	------------------------

121.5	140.3	185.9	232.8
130.6	150.9	200	250
137.4	158.6	212	266.4
123.8	142.9	191.0	240.0
121	140	184	238
130	150	200	250
137.4	158.6	212	266.4
126.6	146.0	195.3	245.4

88.4	88.4	87.7	87.4
95.1	95.1	93.9	93.9
97.8	97.8	98.3	98.3
97.3	97.3	97.5	97.5
N/A	N/A	N/A	N/A

13.1	15.1	20.2	25.4
9.8	11.3	14.8	18.6
17-25			
27-45			
1	1	1½	1½
Male Thread			

181	208	331	422
166	191	303	386
207	240	320	400
190	219	292	367
200	200	200	200

2.08	2.71	3.19	3.99
1.56	1.80	2.39	2.99
1.0	1.2	1.6	2.0
69	70	67	65
41	41	41	41
18	20	20	22
10	11	13	15
1½	1½	2	2
Male Thread			
110/160	110/160	150	150
6			
1			
85			

126	132	212	232
17	23	37	39
9.2 - 9.4	9.2 - 9.4	9.2 - 9.4	8.8 - 9
10 - 10.2	10 - 10.2	10.2 - 10.4	10.2 - 10.4
275	317	424	534
550	634	848	1068

187	283	242	369
230 v 1 Ph 50 Hz			

## Single boiler outputs

**50kW to  
250kW**

## Gross seasonal efficiency

Up to  
**97.5%**

## Modulation ratio

Up to **9:1**

## Cascade outputs

Up to **1MW**

## High efficiency condensing boilers

Designed to meet carbon reduction targets

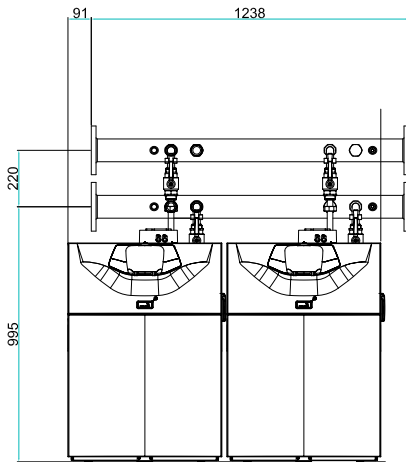
Lifetime service and support



# Floor-standing cascade pipework kits

The Sirius three FS cascade pipework kit accommodates up to four boilers, delivering a maximum output of 1mW, spreading heat demand across multiple boilers.

## Front elevation



For illustration purposes only.

Number of boilers

Up to **4**

Maximum output

Up to **1MW**

Modulation ratio

Up to **9:1**  
per boiler

## Nationwide commissioning service

To ensure maximum efficiency and cost savings, we offer a full commissioning service, carried out by our own national team of Gas Safe registered, Potterton trained engineers.

Part no.	Description	No. of boilers
5142770	Sirius three FS Cascade Pipework System - 50 and 70kW Models	2 x 50/70kW Excl LLH
5142771	Sirius three FS Cascade Pipework System - 50 and 70kW Models	3 x 50/70kW Excl LLH
5142772	Sirius three FS Cascade Pipework System - 50 and 70kW Models	4 x 50/70kW Excl LLH
5142773	Sirius three FS Cascade Pipework System - 90 and 110kW Models	2 x 90/110kW Excl LLH
5142774	Sirius three FS Cascade Pipework System - 90 and 110kW Models	3 x 90/110kW Excl LLH
5142775	Sirius three FS Cascade Pipework System - 90 and 110kW Models	4 x 90/110kW Excl LLH
7718407	Sirius three FS Cascade Pipework System - 130 and 150kW Models	2 x 130kW Inc LLH
7718408	Sirius three FS Cascade Pipework System - 130 and 150kW Models	3 x 130kW Inc LLH
7718409	Sirius three FS Cascade Pipework System - 130 and 150kW Models	4 x 130kW Inc LLH
7718410	Sirius three FS Cascade Pipework System - 130 and 150kW Models	2 x 150kW Inc LLH
7718411	Sirius three FS Cascade Pipework System - 130 and 150kW Models	3 x 150kW Inc LLH
7718412	Sirius three FS Cascade Pipework System - 200 and 250kW Models	2 x 200kW Inc LLH
7718413	Sirius three FS Cascade Pipework System - 200 and 250kW Models	3 x 200kW Inc LLH
7718415	Sirius three FS Cascade Pipework System - 200 and 250kW Models	2 x 250kW Inc LLH
7730645	Sirius three FS Cascade Pipework System - 130 and 150kW Models	2 x 130kW Exc LLH
7737682	Sirius three FS Cascade Pipework System - 130 and 150kW Models	3 x 130kW Exc LLH
7737683	Sirius three FS Cascade Pipework System - 130 and 150kW Models	4 x 130kW Exc LLH
7737684	Sirius three FS Cascade Pipework System - 130 and 150kW Models	2 x 150kW Exc LLH
7737685	Sirius three FS Cascade Pipework System - 130 and 150kW Models	3 x 150kW Exc LLH
7737686	Sirius three FS Cascade Pipework System - 200 and 250kW Models	2 x 200kW Exc LLH
7737687	Sirius three FS Cascade Pipework System - 200 and 250kW Models	3 x 200kW Exc LLH
7718414	Sirius three FS Cascade Pipework System - 200 and 250kW Models	4 x 200kW Exc LLH
7737686	Sirius three FS Cascade Pipework System - 200 and 250kW Models	2 x 250kW Exc LLH
7718416	Sirius three FS Cascade Pipework System - 200 and 250kW Models	3 x 250kW Exc LLH
7718417	Sirius three FS Cascade Pipework System - 200 and 250kW Models	4 x 250kW Exc LLH



# Sirius three FS low loss header and plate heat exchanger kits

Fitting a low loss header allows the boiler to maintain the correct flow of water constantly, ensuring maximum reliability and efficiency. Plate heat exchangers provide a complete hydraulic separation between the boiler and the system. This protects the boiler from old and potentially contaminated system water, whilst also allowing our boilers to be fitted to open vented and reduced delta T systems.

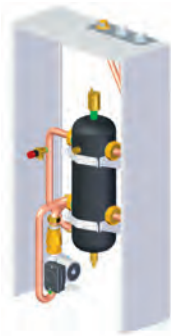
Potterton Commercial offers a range of low loss header and plate heat exchanger solutions for a single boiler appliance for use with the Sirius three FS. These accessories are easily integrated into the boiler. They are supplied with boiler case extension panels which conceal the low loss header or plate heat exchanger arrangement.



Part No.	Description	Boiler output	No. of boilers	
7695069	Low loss header	50/70kW	1	Sirius three FS Low loss header kit (50 and 70kW)
7698937	Low loss header	90/110kW	1	Sirius three FS Low loss header kit (90 and 110kW)
7663934	Low loss header	130/150kW	1	Sirius three FS - Low Loss Header kit (130 and 150kW)
7672216	Low loss header	200/250kW	1	Sirius three FS - Low Loss Header kit (200 and 250kW)
7680549	Plate to plate heat exchanger kit	130/150kW	1	Sirius three FS - Plate to plate HEX kit (130 and 150kW)
7680558	Plate to plate heat exchanger kit	200/250kW	1	Sirius three FS - Plate to plate HEX kit (200 and 250kW)



Low loss header for Sirius three FS 50kW and 70kW



Low loss header for Sirius three FS 90kW and 110kW



LLH Kit for 250 kW boiler



Plate to plate HEX kit for 130 and 150kW boilers



Plate to plate HEX kit for 200 and 250kW boilers



## Sirius FS



The Sirius FS floor-standing condensing boiler provides an energy efficient, cost effective heating solution for large commercial buildings such as schools, hotels, nursing homes and leisure facilities. Both models benefit from the latest burner technology which delivers an impressive modulation ratio of 5:1.

### Single boiler outputs

**400kW and  
525kW**

### Gross seasonal efficiency

**97%**

### Modulation ratio

**5:1**

### Applications

Large commercial premises and packaged plant solutions.

### Commissioning

Carried out by Potterton Commercial engineers, ensures optimum performance, efficiency and savings.

### Service plans

We provide expert, professional support ensures optimum performance is maintained throughout the lifetime of your boiler.

\*Subject to terms and conditions.  
See [pottertoncommercial.co.uk](http://pottertoncommercial.co.uk) for more details.

## Features and benefits

### Features

Stainless steel heat exchanger.

Very compact design.

0-10 V connections as standard.

Free commissioning by Potterton Commercial engineers.

Service plans available.

The controls can be programmed to work with solar thermal, biomass and buffer tanks.

### Benefits

Designed for maximum combustion performance and safety.

Easy to fit in confined spaces.

For easy BMS interface.

Ensures optimum performance, efficiency and savings.

Ongoing support, whenever you need it.

Sustainable, energy efficient solution for a wide range of applications.

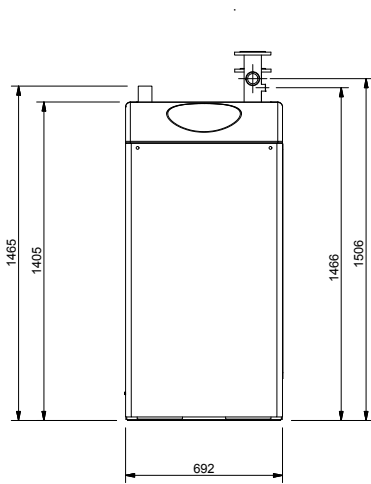
## Optional accessories

A range of intelligent controls and accessories are available for use with Sirius FS boilers, to meet the heating requirements of the building accurately and efficiently.

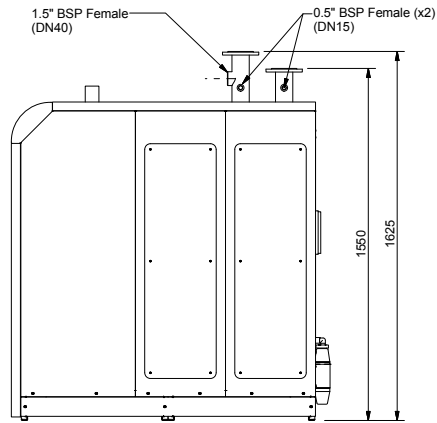
Model	Sales code	Description
Digital thermostat	5138511	Wired digital room thermostat – remote from the boiler. Used to control the temperature operation of the boiler.
Programmable digital room thermostat	5138510	Wired digital programmable room thermostat – remote from the boiler. Used to control the time and temperature operation of the boiler.
DHW temperature sensor	5116436	Immersion, dry pocket temperature sensor providing boiler temperature control for DHW storage vessels.
Variable temperature (VT) extension module	5138513	A module for controlling one additional variable temperature heating circuit.
Flow temperature sensor – boiler	5103867	Strap-on pipe sensor for monitoring boiler flow temperature. For further improvements to system performance, it is advisable to use a sensor on both flow and return. Only required for cascade configurations.
BM BUS module	5136893	Additional clip-in wired module, (one per boiler), to allow the boiler(s) to communicate with each other when installed in cascade as a 'master and slave' configuration.
Volt free relay module	5136906	Volt free fault or run indicators for output to BMS controls.

# Dimensions

## Sirius FS 400

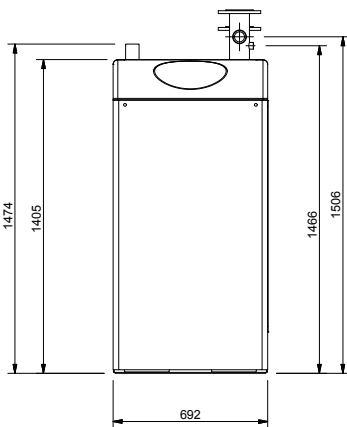


Front view

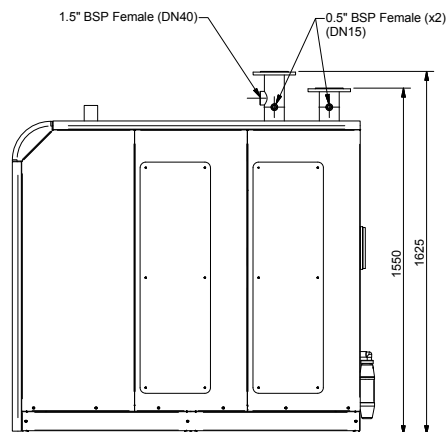


Side view

## Sirius FS 525



Front view



Side view

		Sirius FS 400	Sirius FS 525
Height	mm	1405	1405
Width	mm	692	692
Depth	mm	1341	1558
Service clearance, rear	mm	600	600
Service clearance, right and top	mm	600	600
Service clearance, left	mm	400	400
Service clearance, front	mm	800	800

# Technical specification

Performance	Fuel Type		Sirius FS 400	Sirius FS 525
Output @ 80 / 60°C	NG	kW	368.6	485.5
Output @ 50 / 30°C	NG	kW	401	527
Input (gross) maximum	NG	kW	421.7	554.9
Efficiency	Value %			
Efficiency @ 50 / 30°C – 100% load	% Gross		95.1	95
Efficiency @ 50 / 30°C – 30% load	% Gross		97.4	97.8
Current building regulations – Part L2 seasonal efficiency	% Gross		97	97.2
Gas				
Gas Consumption (Natural Gas)	m <sup>3</sup> /h		3.5-40.0	4.5-52.4
Inlet Gas Pressure (Natural Gas - G20)	m/bar		18-20	18-20
Gas connection size	inch		2	
Gas connection type	Threads		Male threads	
Flue				
Flue Gas Volume at 80/60°C (NG)	m <sup>3</sup> /h at STP		673	875
Flue Gas Volume at 50/30°C (NG)	m <sup>3</sup> /h at STP			
Max Flue Gas Pressure @ Outlet	mbar		200	250
Minimum Flue Gas Pressure @ Outlet	mbar			
Hydraulic				
Water Flow Rate @ 15°C ΔT	l/s		6.4	8.4
Water Flow Rate @ 20°C ΔT	l/s		4.8	6.3
Hydraulic Resistance @ 15°C ΔT	kPa		73	66
Hydraulic Resistance @ 20°C ΔT	kPa		42	38
Water Content	litres		30	43
Flow & Return Connection Type	flanged		DN65 PN6	DN80 PN6
Flue Connection Size	mm		180	180
Maximum Boiler Operating Pressure	bar		6	
Minimum Boiler Operating Pressure	bar		1	
Maximum Flow Temperature	°C		90	
General				
Appliance Dry Weight	Kg		359	424
NO <sub>x</sub> Level (Dry @ 0% O <sub>2</sub> )	mg/kWh		45	45
CO <sub>2</sub> Content – Natural Gas	%		9.0 (8.7)	9
Noise levels @ 1 metre from unit (room-sealed)	dB(A)		59	65
High Level Ventilation (BS 6644)	cm <sup>2</sup>		760	1000
Low Level Ventilation (BS 6644)	cm <sup>2</sup>		1520	2000
Electrical				
Power consumption	W		253	322
Nominal Supply Voltage	V/Hz		230V~ / 50Hz	



## Flue options

Potterton Commercial offers a comprehensive choice of flues and accessories for Sirius three FS and WH boilers, suitable for practically every application, including horizontal or vertical concentric (C13 and C33) flues for room-sealed applications.

If using conventional (B23) and modular flues, we recommend you consult with a flue expert on the design and supply of the flue system.

### Flue

Boiler and output	Flue size	Max flue with 0 elbows	Number of bends 87*			
			1	2	3	4
WH/FS50	Ø 80/125	10m	9m	8m	7m	6m
WH60	Ø 80/125	10m	9m	8m	7m	6m
WH/FS70	Ø 80/125	10m	9m	8m	7m	6m
WH/FS90	Ø 100/150	10m	9m	8m	7m	6m
WH/FS110	Ø 100/150	10m	9m	8m	7m	6m
WH/FS130	Ø 110/150	8m	7m	6m	5m	4m
WH/FS150	Ø 110/150	8m	7m	6m	5m	4m
FS200	Ø 150		(please refer to a flue specialist)			
FS250	Ø 150		(please refer to a flue specialist)			

## Common concentric flue components

Boiler and output	Sales code	Flue size	Description	
WH 50/60/70 FS 50/70 WH/FS 90/110/130/150*	5136146 5136170	Ø 80/125 Ø100/150	Horizontal concentric flue. Inc: terminal and wall plates	
WH 50/60/70 FS 50/70 WH/FS 90/110/130/150*	5136147 5136171	Ø80/125 Ø100/150	Vertical concentric flue kit	
WH 50/60/70 FS 50/70 WH/FS 90/110/130/150	5136148 5136159	Ø80/125 Ø100/150	1 metre concentric extension	
WH 50/60/70 FS 50/70 WH/FS 90/110/130/150	5136149 5136160	Ø80/125 Ø100/150	0.5 metre concentric extension	
WH 50/60/70 FS 50/70 WH/FS 90/110/130/150	5136150 5136161	Ø80/125 Ø100/150	45° Concentric elbow	
WH 50/60/70 FS 50/70 WH/FS 90/110/130/150	5136151 5136162	Ø80/125 Ø100/150	87° Concentric elbow	
WH 50/60/70 FS 50/70 WH/FS 90/110/130/150	5136152 5136163	Ø 80/125 Ø100/150	Wall stand off brackets	
WH 50/60/70 FS 50/70 WH/FS 90/110/130/150	E105 E630	Ø80/125 Ø100/150	Terminal cage guard	
WH 50/60/70 FS 50/70 WH/FS 90/110/130/150	E065 E207	Ø80/125 Ø100/150	Flat roof flashing	
WH 50/60/70 FS 50/70 WH/FS 90/110/130/150	E066 E208	Ø80/125 Ø100/150	Pitched roof flashing	
WH 50/60/70 FS 50/70 WH/FS 90/110/130/150	5136153 5136164	Ø80/125 Ø100/150	Siphon kit supplied with Condensation trap	
WH 50/60/70 FS 50/70 WH/FS 90/110/130/150	5136154 5136165	Ø80/125 Ø100/150	Locking Camp	
WH 50/60/70 FS 50/70 WH/FS 90/110/130/150	5136155 5136166	Ø80/125 Ø100/150	80mm Seal	

\*110/160 to 100/150 adapter also provided.

## External flue kit

### External wall starter kit

A Through wall piece with bottom elbow

B Air intake

C 80/125-100/150 adapter  
(Sirius three WH/FS 50, 60 and 70kW)

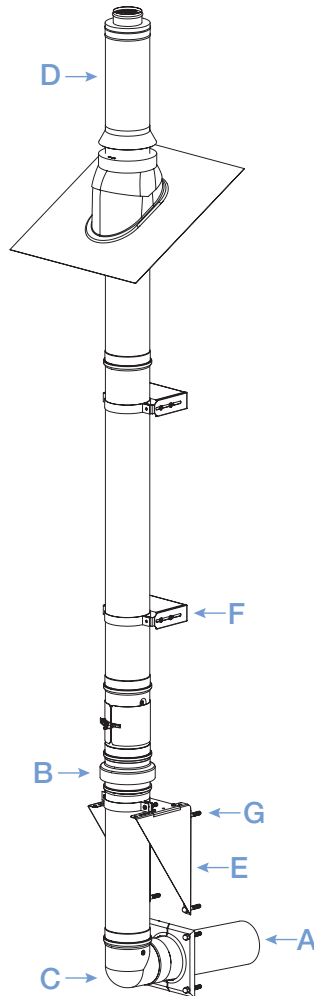
D 100/150 flue terminal

E Bottom wall support

F Wall brackets x2

G Fixings x3

110/160-100/150 adaptor is also provided with  
the WH/FS 90-150kW starter kit



Model	WH/FS 50	WH60	WH/FS 70	WH/FS 90	WH/FS 110	WH/FS 130	WH/FS 150
Starter kit	5138541	5138541	5138541	5138542	5138542	5138542	5138542
<b>Optional flue accessories</b>							
1 metre extension	5138545	5138545	5138545	5138545	5138545	5138545	5138545
0.5 metre extension	5138546	5138546	5138546	5138546	5138546	5138546	5138546
45° elbow (x2)	5138547	5138547	5138547	5138547	5138547	5138547	5138547
Inspection tee	5138548	5138548	5138548	5138548	5138548	5138548	5138548



## Plume management kit

### Flue size 80/125 (Sirius three WH/FS 50, 60 and 70kW)

A Horizontal terminal (610mm) including clamp

B Wall plate 125mm (220x220mm) x2

C 90° elbow 80mm x2

D 1 metre extension 80mm including wall bracket

E Nose piece 80mm (150mm)

Does not include initial elbow on boiler.  
See below table for options

### Flue size 100/150 (Sirius three WH/FS 90/110/130/150kW)

A Horizontal terminal (600mm) including clamp

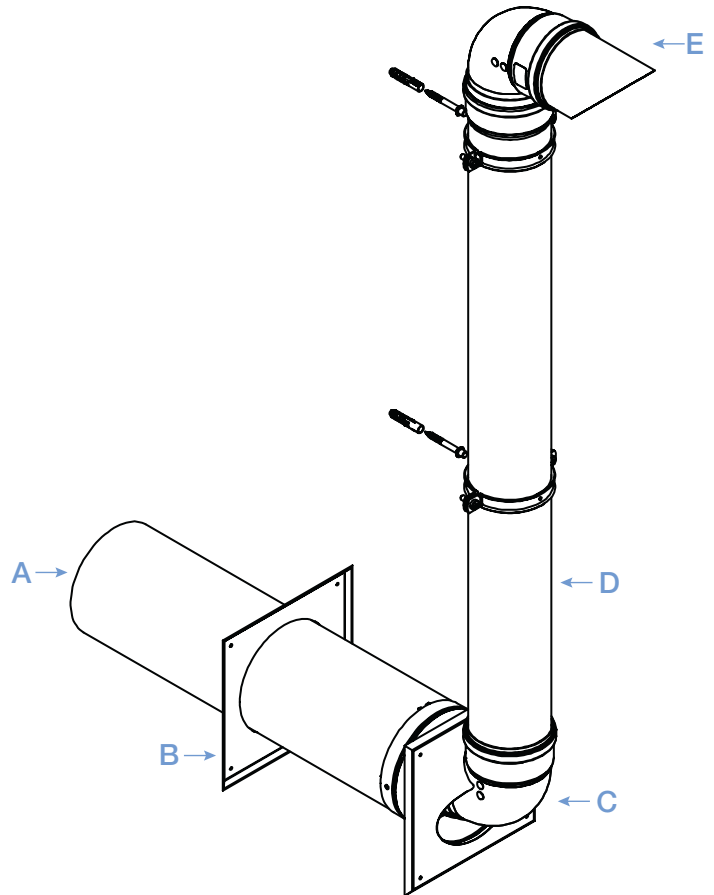
B Wall plate 150mm (220x220mm) x2

C 87° elbow 100mm x2

D 1 metre extension 100mm including wall bracket

E Nose piece 100mm (170mm)

Does not include initial elbow on boiler.  
See below table for options



Model	WH/FS 50	W 60	WH/FS 70	WH/FS 90	WH/FS 110	WH/FS 130	WH/FS 150
Plume Management Kit	5136902	5136902	5136902	5138512	5138512	5138512	5138512

#### Optional flue accessories

1 metre extension – 80	5138537	5138537	5138537	-	-	-	-
1 metre extension – 100	-	-	-	5138540	5138540	5138540	5138540
45° elbow – 80	5138536	5138536	5138536	-	-	-	-
45° elbow – 100	-	-	-	5138539	5138539	5138539	5138539
90° elbow – 80	5138535	5138535	5138535	-	-	-	-
90° elbow – 100	-	-	-	5138538	5138538	5138538	5138538

# Cascade flue system

The Potterton cascade flue system is designed for internal use in a plant room and not for external installation. The system is supplied complete with all associated components. The basic PP 150mm and 200mm flue cascade kits are suitable for the connection of two boilers (2 x Sirius three WH or FS) in an in-line configuration using 700mm centres and include a non-return valve. For the connection of additional boilers, simply attach a cascade extension header kit for each additional boiler.

A fall should be maintained to the cascade header which equates to 3 degrees. This means the flue rises 52mm for every metre. Equating this to our flue centres of 700mm, the flue connection length (from the boiler to the header) increases by 36mm for each boiler (e.g. a 4000mm Cascade Header requires a differential of 208mm from one end to the other).

Please note that 110, 130 and 150kW Sirius boilers are not suitable for use with our cascade flue system. Customers wishing to cascade boilers from 110kW and above should consult with a specialist chimney supplier for design input.

## Cascade flue kits

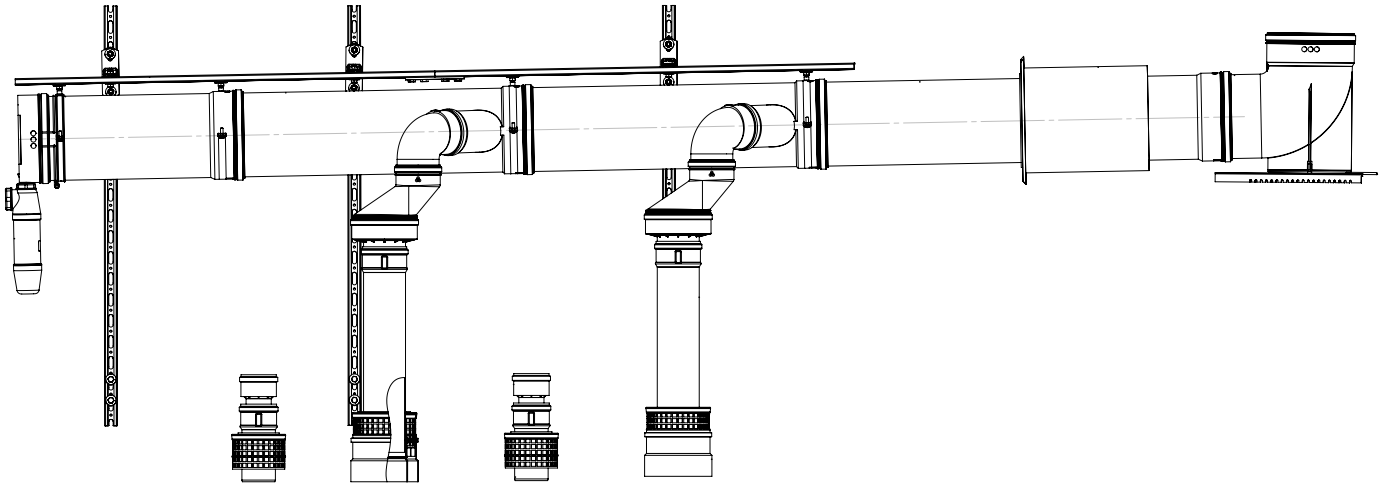
7697347	150mm In-line Flue Cascade Header Kit
7697352	150mm In-line Flue Cascade Header Kit (Extension)
7697355	200mm In-line Flue Cascade Header Kit
7697406	200mm In-line Flue Cascade Header Kit (Extension)

## NRVs

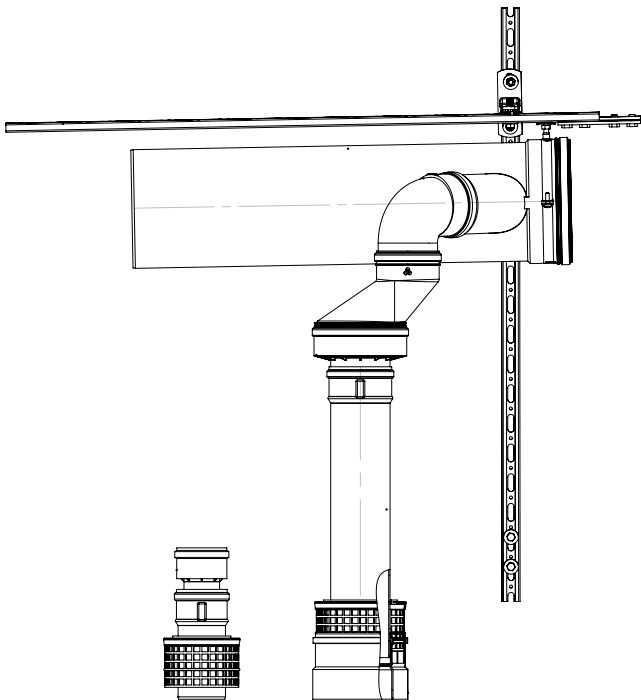
50 and 70kW FS flue non return valve kit	5142804	Flue non-return valve kit for boilers in cascade configurations (50 and 70kW models)
50 and 70kW WH flue non return valve kit	7106820	Flue non-return valve kit for boilers in cascade configurations (50 - 70kW models)
90-150kW WH/FS flue non return valve kit	7700811	Flue non-return valve kit for boilers in cascade configurations (90-150kW models)

These NRVs are not the same as those supplied with our fluecade. The fluecade comes supplied with different NRVs and the below part numbers are separate items for flue cascades when not using the Potterton cascade flue kits

## Basic cascade flue kit



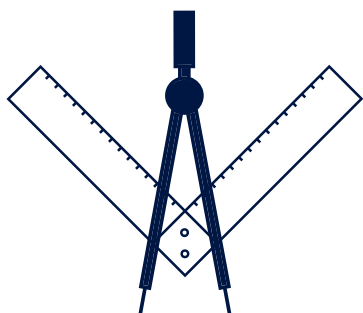
## Basic cascade flue extension kit



Sirius three WH and FS	Max no. of boilers in a cascade connection	
	ø150mm (240kW max)	ø200mm (460kW max)
50kW	4	6
60kW	4	6
70kW	3	6
90kW	2	5

# Support you can depend on

We want to help you achieve the best results, quickly and cost effectively. Whatever you need, expert support is never more than a phone call away.



---

## Applications support

We can guide you through the requirements of Building Regulations Part L2a and b, and help you meet legislation and building service engineering standards. We can provide application support, advice and solutions by email, on the phone or on site, at all stages of your project.



---

## Technical information

All the technical information you need is easy to find on our website, using your smartphone, tablet or PC:

- BIM files
- CAD files
- Brochures
- Technical specification sheets
- Case studies
- Installation manuals
- User guides



## Specification and sales support

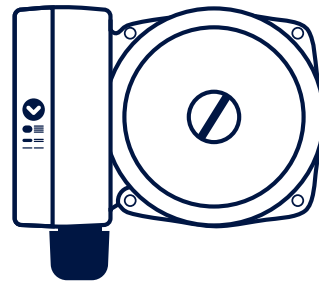
The Potterton Commercial team has achieved the ISO 9001 quality management standard and the Investors in People - bronze award, so you know you can depend on us to give you outstanding service.

We are here to help you book commissioning, service or repair visits, and to register your warranties.

Our technical helpline is manned by former engineers with industry experience. They can provide technical information, installation support and help with fault finding and diagnostics.

We have a national network of engineers who are trained on all our products.

They can provide a commissioning service as well as carrying out service and repair work.



## Genuine parts

Genuine manufacturer's parts for all Potterton Commercial boilers are available through a national network of stockists. They are available for up to 10 years after manufacture of the boiler stops, so you know your boiler will be supported.

Visit [www.baxigenuineparts.co.uk](http://www.baxigenuineparts.co.uk) to find a stockist or to search for a part by name, brand or Gas Council number.

sales 0345 070 1055  
technical 0345 070 1057  
web [pottertoncommercial.co.uk](http://pottertoncommercial.co.uk)

Registered office address: Baxi Heating UK, Coventry Road, Warwick, CV34 4LL

July 2021

Totally dependable.

**POTTERTON**  
COMMERCIAL

## ALL TOGETHER BETTER

**BAXI**  
HEATING

BAXI HEATING HAS A PORTFOLIO OF SOME OF THE BEST KNOWN AND MOST RESPECTED COMMERCIAL BRANDS IN THE HEATING INDUSTRY ACROSS THE UK AND IRELAND.



● ● ● ● ● COMMERCIAL SOLUTIONS FROM **BAXI HEATING**